



An ISO 9001:2015 Company



MASTER CATALOGUE

*Premium Healthware
for Excellent Healthcare*



Swisware⁺
SANITARYWARES

Swisware⁺

SANITARYWARES

COLOUR RANGE



WHITE



LIGHT BLUE



MINT GREEN



PINK



IVORY



GREY



RED BROWN



COFFEE BROWN



MAGENTA



ALPINE BLUE



OASIS GREEN



ROYAL BLACK



BURGUNDY



PACIFIC BLUE



ORANGE



BLOOD RED

Rustic Colour



RED BROWN



COFFEE BROWN



MAGENTA



ROYAL BLACK



ALPINE BLUE



An ISO 9001:2015 Company

*Premium Healthware
for Excellent Healthcare*



Swisware⁺
SANITARYWARES

**CREATION COMES IN MANY SHAPES AND FORMS.
ART ARISES WHEN THE SECRET VISION OF THE ARTIST AND
THE MANIFESTATIONS OF NATURE AGREE TO FIND
NEW SHAPES.**

www.smruticeramic.com

- ALL SIZES MENTIONED ARE APPROXIMATE.
- BUYERS ARE REQUESTED TO CHECK THE ACTUAL PRODUCT BEFORE BUYING.

**ONE PIECE
TOILET**



101 (9")
L-26, B-15, H-26



102 (9")
L-27, B-15, H-26



111 (9")
L-27, B-14, H-25



103 (9")
L-27, B-14, H-27



105 (9")
L-26, B-14, H-27



107 (9")
L-26, B-14, H-30



108 (9")
L-25, B-14, H-27



109 (9")
L-26, B-14, H-29



110 (9")
L-25, B-14, H-27



112 (9")
L-26, B-14, H-28



113 (9")
L-25, B-14, H-28



115 (9")
L-26, B-14, H-29



204 (4")
L-27, B-14, H-27



SYPHONIC (9")
L-26, B-14, H-30



Swisware⁺
SANITARYWARES

ONE PIECE
TOILET



1111



1112



1113



1114



1115



1116



1117



1118



1121



1122



1123



1124



1125



1126



1127

Swisware+
SANITARYWARES

**ONE PIECE
TOILET**



1131



1132



1133



1134



1141



1142



1143



1144



1151



1152



1153



1154



1155



1156



1190



1191



1192



1193



1194



1195



1196



1197



1198



1171



1181



1182



1183

WATER CLOSET



WALL HUNG ALPHA



E.W.C - ECO CONCEALED



E.W.C - ECO CONCEALED SLIM

Swisware⁺
SANITARYWARES

**WATER
CLOSET**



E-01



E-02



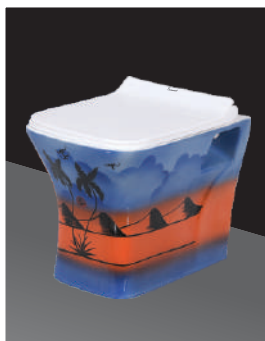
E-03



E-04



E-05



E-06



E-07



E-08



E-09



E.W.C - MODERN



E.W.C - CONCEALED



E.W.C - S TRAP



E.W.C - P TRAP



ANGLO INDIAN - S TRAP



ANGLO INDIAN - P TRAP

**WASH
BASIN**



12x9"



13"x9" SQUARE



14x11 ROUND



16x16 CORNER



17x11



18x12



18x13



18x14



18x14 GOLDEN



16x12



18x14 POLO



18x16 MICRA



18x12 SQUARE



20x16



22x16



Swisware+
SANITARYWARES

PLAIN SET



GOLDEN SET (18X14)



POLO SET (18X14)



MICRA SET (18X16)



REPOSE SET (22X16)



SERENA SET (23X17)



AMEO SET (18X16)



FABIA SET (20X17)



SOFIYA SET (22X17)



STERLING SET (22X17)



SUPREME SET (23X17)



CRETA SET (23x17)



AMAZON SET (22x17)



LAURET SET (24X18)



LEXO SET (24X18)



CRYSTA SET (24X18)



EURO SET (24X19)



INNOVA SET (23X18)



BIG STERLING SET (25X21)



DOLPHIN SET (18X20)



DIAMOND SET (23X20)

Swisware⁺
SANITARYWARES

**UNDER
COUNTER**



UNDER COUNTER 18x18



UNDER COUNTER 22x16

LAB SINK



24 x18x10



20 x16x7



18 x12x6

**SMALL
BASIN**
Vitrosa/Rustic



18x13



12x9



14x11



16x16 Corner



18x14



18X12 RUSTIC



18x12

ONE PIECE
BASIN



DAMRU L-16, H-31



NOVA L-15, H-31



DAMRU PLUS L-16, H-32



RUBY L-16, H-33



ROYAL L-16, H-34



RAINBOW L-18, B-14, H-31



DIAMOND L-18, H-32



CROWNIE L-16, H-33



SAPPHIRE L-16, B-14, H-32



EAGLE L-17, B-13, H-32



VOLVO L-18, H-31



LAVA (L19, B15, H32)



SCORPIO L-18, H-32



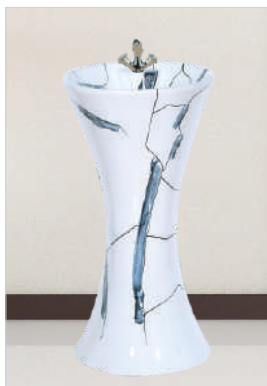
Swisware⁺
SANITARYWARES

ONE PIECE BASIN

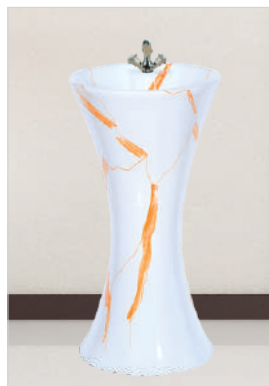
DAMRU
VITROSA



41



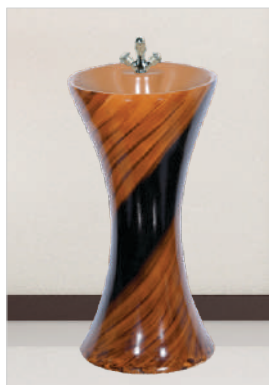
42



43



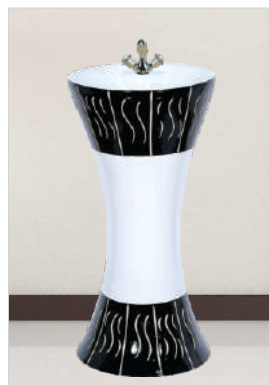
44



46



47



48



49



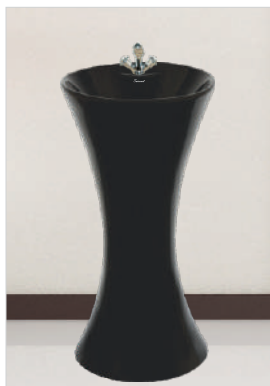
50



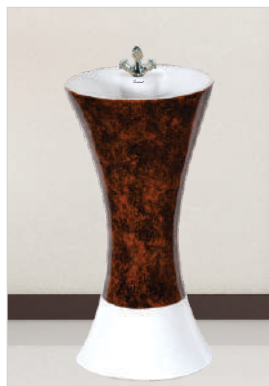
51



52



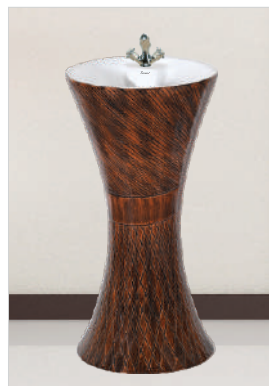
53



54



55



56

Swisware+
SANITARYWARES

ONE PIECE BASIN

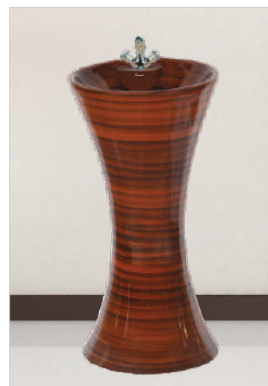
DAMRU
VITROSA



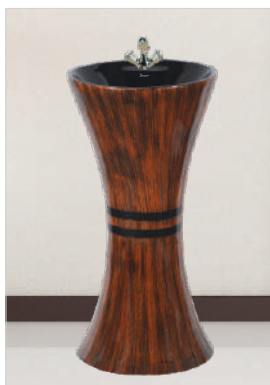
57



58



59



60



61



62



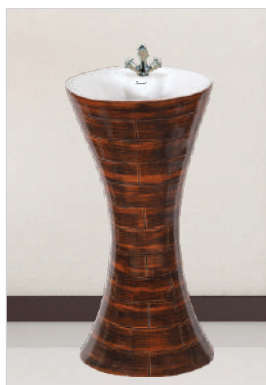
63



64



65



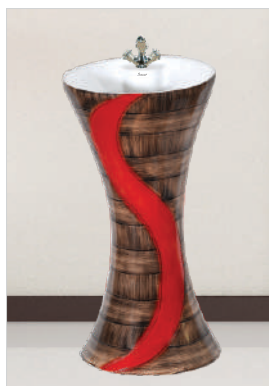
66



67



68



69



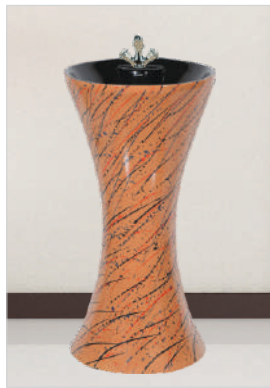
70



71



72



73



74



75



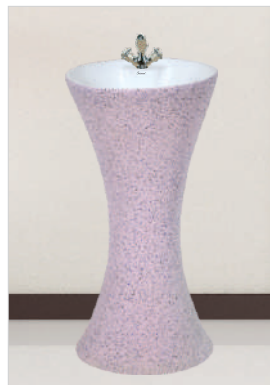
76



77



78



79



80



81



82



83



84



85



86



87

Swisware+
SANITARYWARES

ONE PIECE BASIN

DAMRU
VITROSA



88



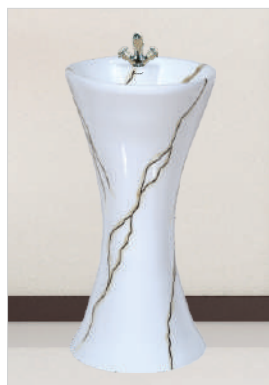
89



90



91



92



93



94



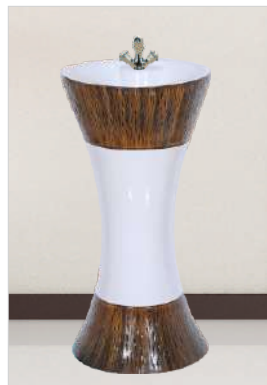
95



97



99

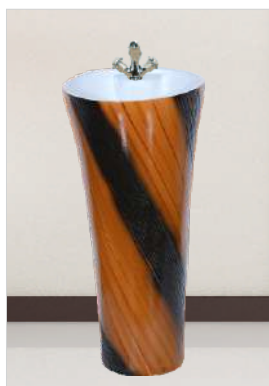


100

Swisware+
SANITARYWARES

ONE PIECE BASIN

NOVA
VITROSA



150



151



152



153



154



155



156



157



158



161



162

Swisware+
SANITARYWARES

ONE PIECE BASIN

DAMRU PLUS
VITROSA



29



30



31



32



33



34



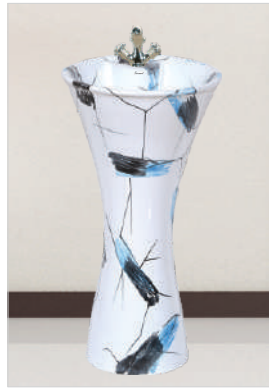
35



36



37



38



39

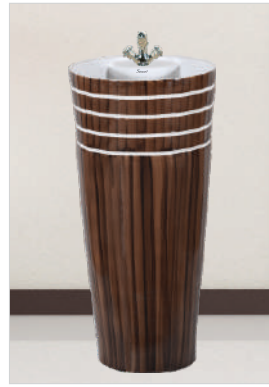


40

Swisware+
SANITARYWARES

ONE PIECE BASIN

RUBY
VITROSA



250



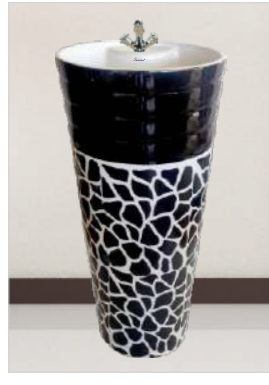
251



252



253



254



255



256



257

Swisware+
SANITARYWARES

ONE PIECE BASIN

ROYAL
VITROSA



350



351



352



353



354

Swisware+
SANITARYWARES

ONE PIECE BASIN
RAINBOW
VITROSA



570



571



572



573



574



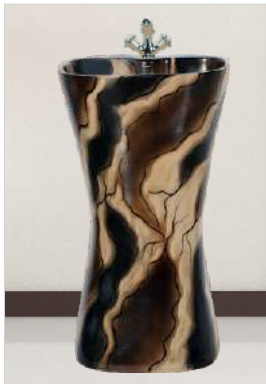
575



576



577



578



579



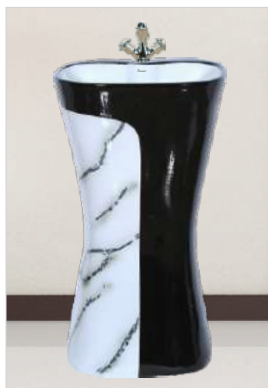
580



581



582



583



584



585

Swisware+
SANITARYWARES

ONE PIECE BASIN

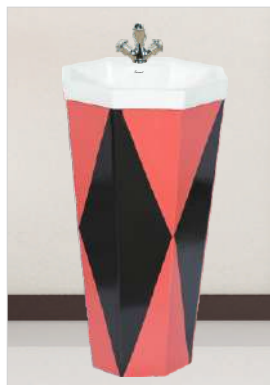
DIAMOND
VITROSA



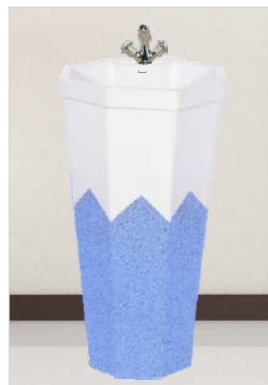
271



272



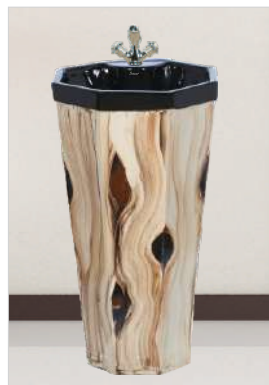
273



274



275



276



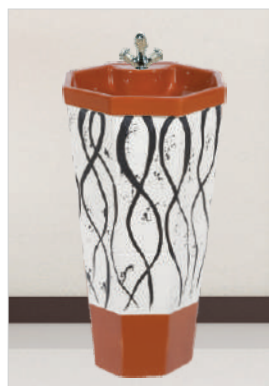
277



278



279



280



281



282



283



284



285



Swisware+
SANITARYWARES

ONE PIECE BASIN

CROWNIE
VITROSA



170



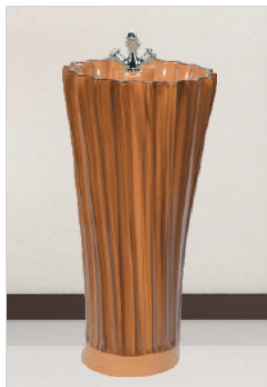
171



172



173



174



175



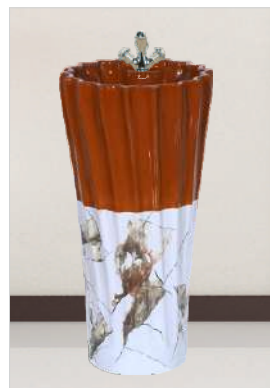
176



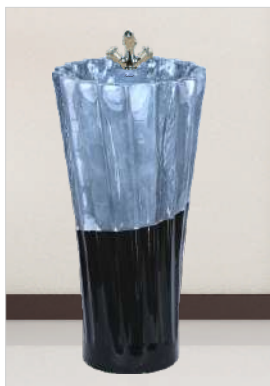
177



179



180



181

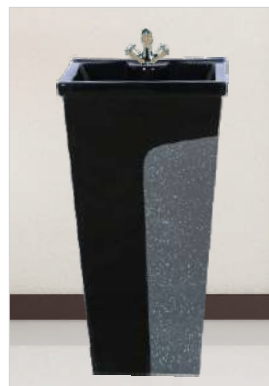
Swisware+
SANITARYWARES

ONE PIECE BASIN

SAPPHIRE
VITROSA



365



367



369



370



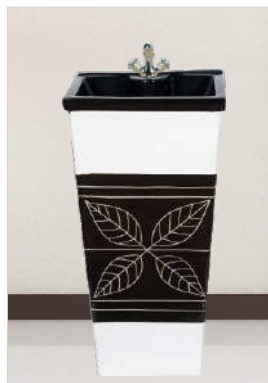
371



372



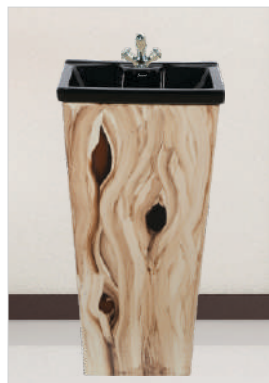
373



375



374



376



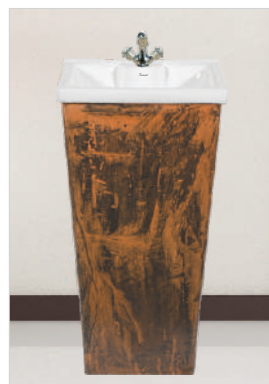
377



378



379



380

Swisware+
SANITARYWARES

ONE PIECE BASIN

EAGLE
VITROSA



381



382



383



384



385



386



387



388



389



Swisware+
SANITARYWARES

ONE PIECE BASIN

VOLVO
VITROSA



330



331



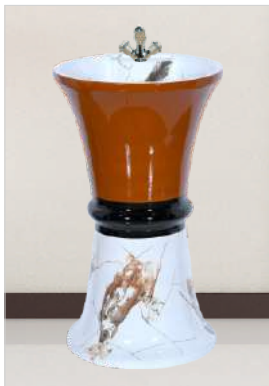
332



333



334



335

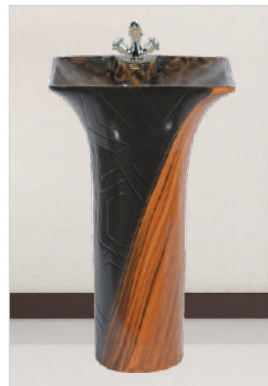
Swisware+
SANITARYWARES

ONE PIECE BASIN

LAVA
VITROSA



190



191



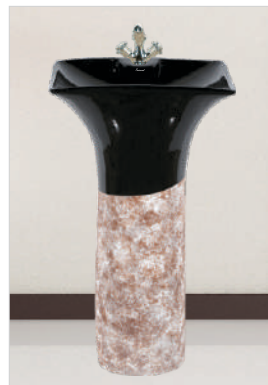
192



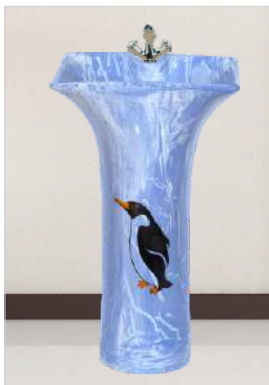
193



194



195



196



197



550

Swisware+
SANITARYWARES

ONE PIECE BASIN

SCORPIO
VITROSA



551



552



553



554



555



556



557

Swisware⁺
SANITARYWARES

**TABLE TOP
WASH BASIN**



12x12



7501

23x14



7502

14x10



7503

16x10



7505

17x11



7506

17x17



7507

17x13



7508

16x16



7509

16x12



7510

15x11



7601

16x12



7701

24x15



7702

20x13



7703

20x16



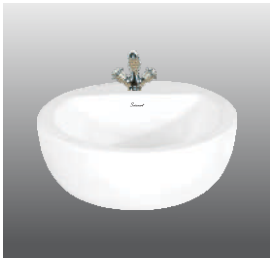
7704

20x16



7705

16x16



7706 17x17



7707 23x17



7708 19x15



7709 16x16



7710 13x13



7801 22x17



7802 17x17



7803 18x14



7804 18x18



7805 18x14



7807 16x16



7808 16x10



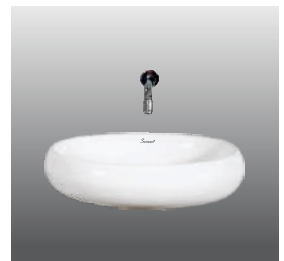
7809 16x16



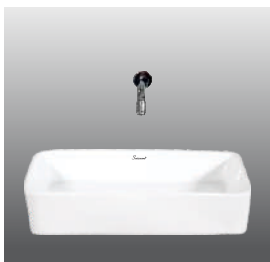
7810 16x16



7901 28x14



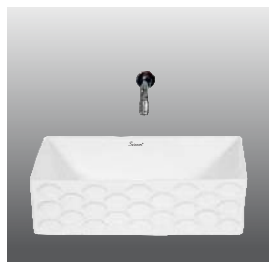
7902 23x14



7903 25x15



7904 19x14



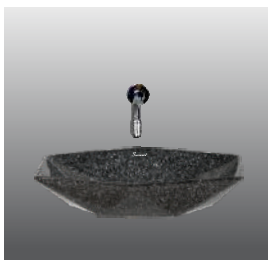
7905 19x15



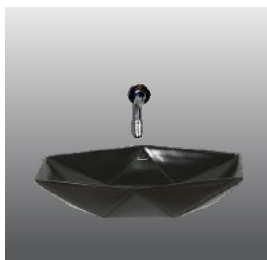
14x14 NEW CORNER

Swisware⁺
SANITARYWARES

TABLE TOP
VITROSA BASIN



7511



7512



7513



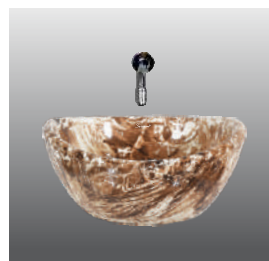
7521



7522



7523



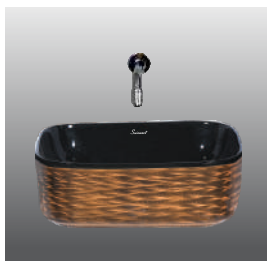
7531



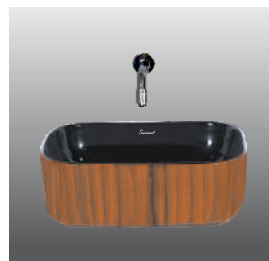
7532



7533



7661



7662



7663



7664



7665



7666



7667





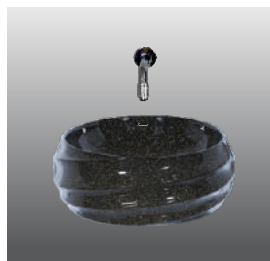
7668



7651



7652



7653



7654



7655



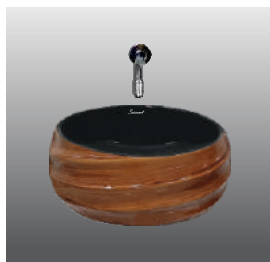
7656



7657



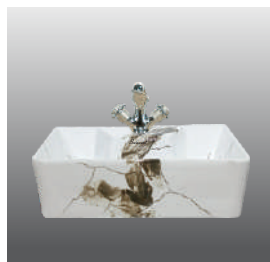
7658



7659



7641



7642



7643



7644



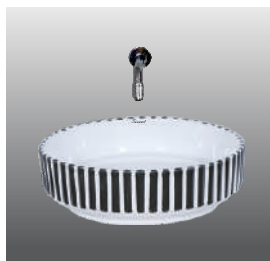
7645



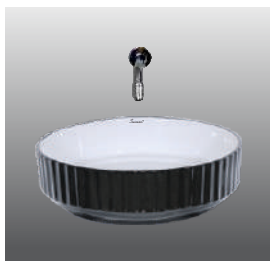
7646



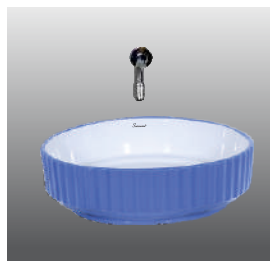
7647



7561



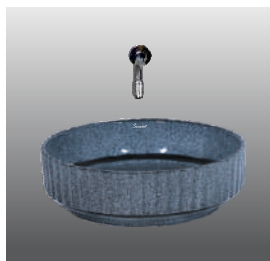
7562



7563



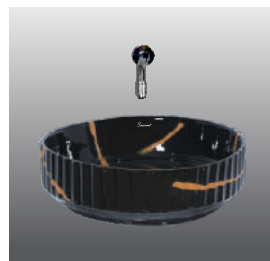
7564



7565



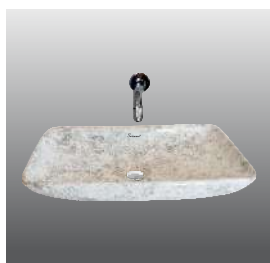
7566



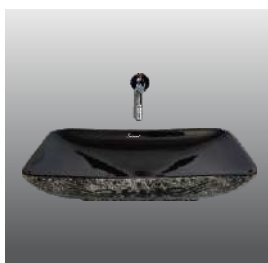
7567



7568



7711



7712



7713



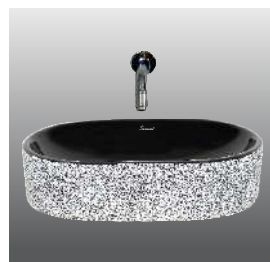
7714



7715



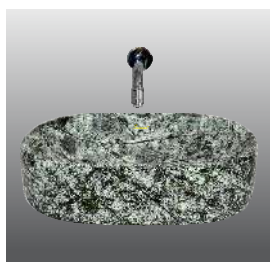
7721



7722



7723



7724



7725



7726



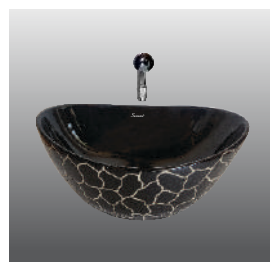
7727



7731



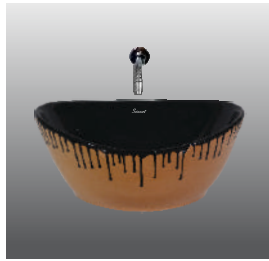
7732



7811



7812



7813



7814



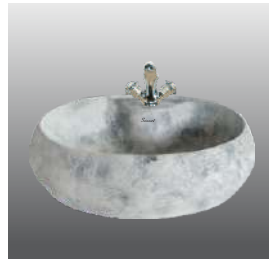
7815



7816



7741



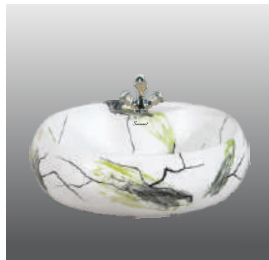
7742



7743



7744



7745



7671



7672



7673



7674



7750



7751



7752



7753



7754



7755



7756



7757



7758



7759



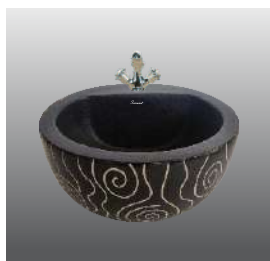
7733



7734



7735



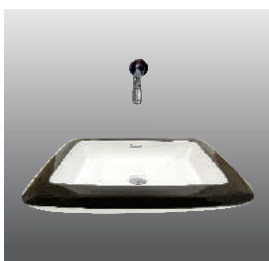
7736



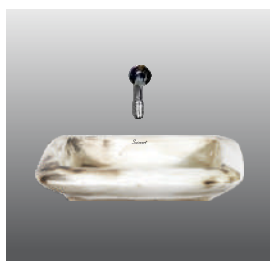
7737



7738



7921



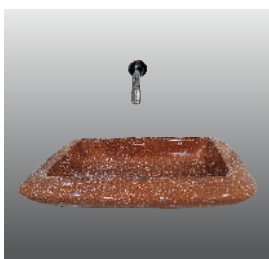
7922



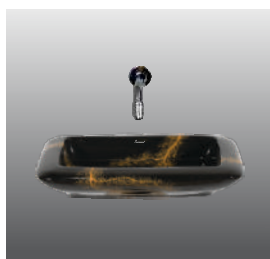
7923



7924



7925



7926



7781



7782



7783



7784



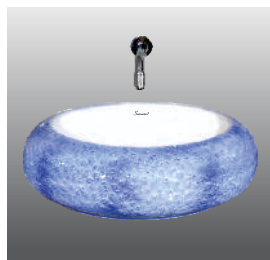
7785



7786



7788



7791



7792



7793



7794



7541



7542



7543



7544



7545



7546



7547



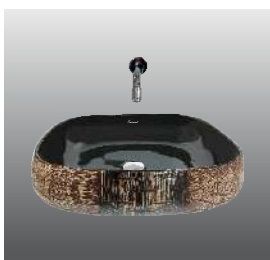
7548



7549



7851



7852



7853



7854



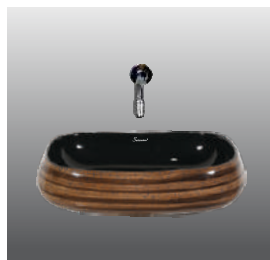
7855



7856



7857



7858



7859



7860



7821



7822



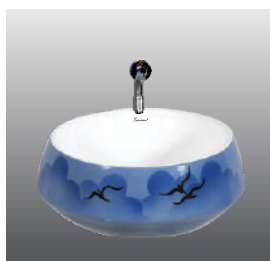
7823



7824



7825



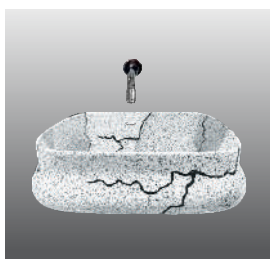
7826



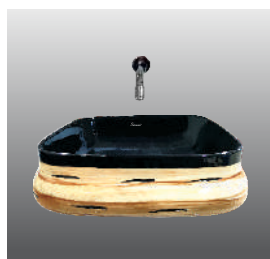
7827



7830



7831



7832



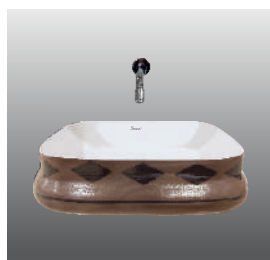
7833



7834



7835



7836



7837



7871



7872



7873



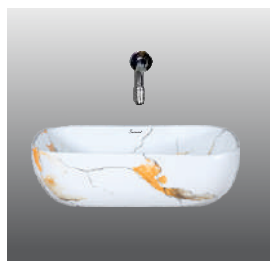
7874



7875



7514



7515



7516



7517



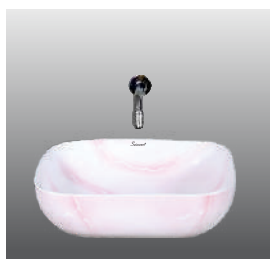
7518



7519



7520



7524



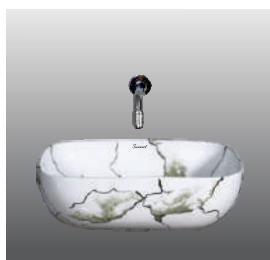
7525



7526



7527



7528



7529



7530



7760



7761



7762



7763



7764



7765



7766



7767



7768



7769



7840



7841



7842



7843



7844



7845



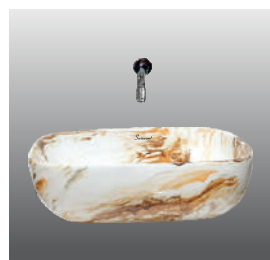
7846



7847



7848



7849



7771



7772



7773



7774



7775



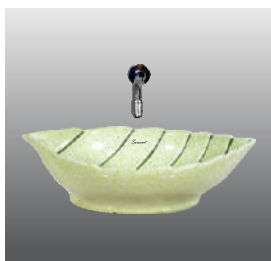
7776



7883



7884



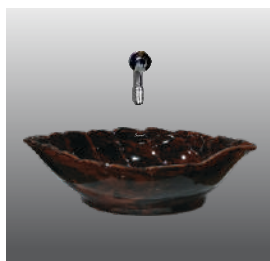
7885



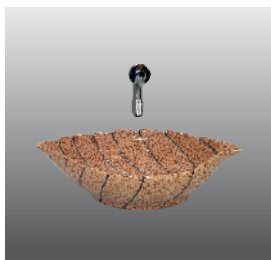
7886



7887



7888



7889



7891



7892



7893



7894



7895



7591



7592



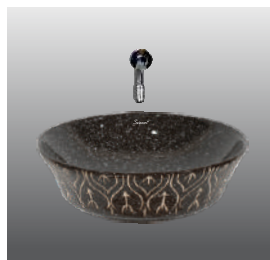
7593



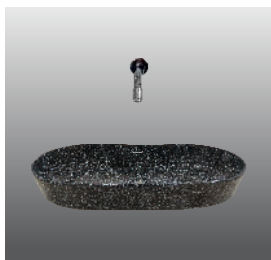
7594



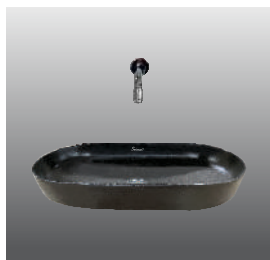
7595



7596



7911



7912



7913



7914



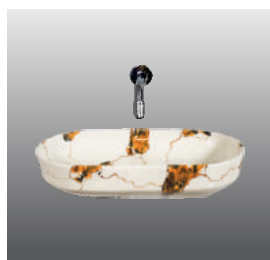
7915



7916



7917



7918



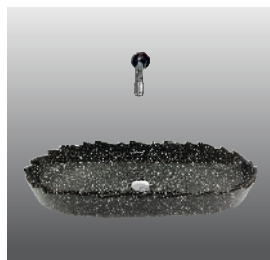
7919



7920



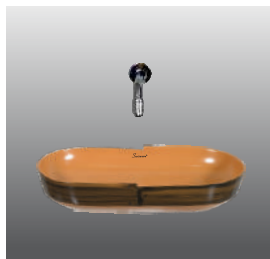
7951



7952



7953



7954



7941



7943



7944



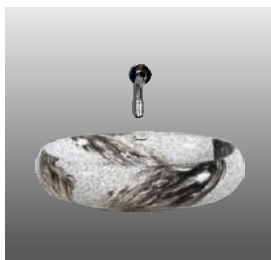
7945



7946



7947



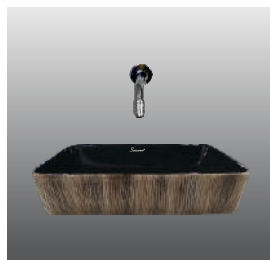
7949



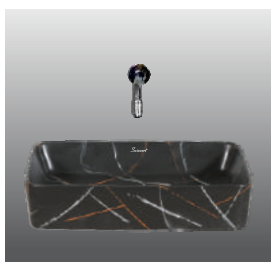
7950



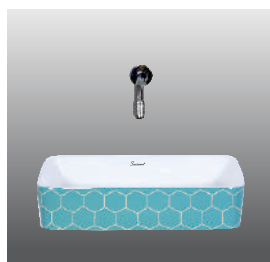
7931



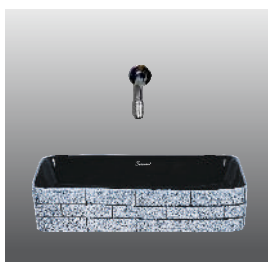
7932



7933



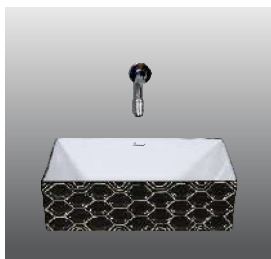
7934



7935



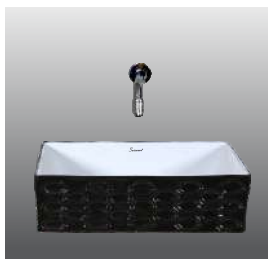
7963



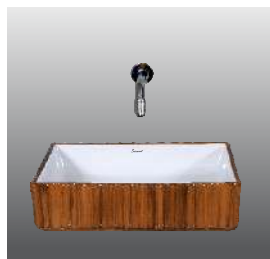
7964



7965



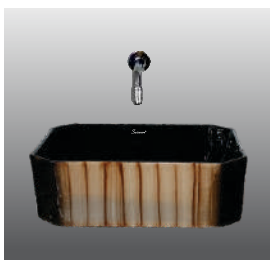
7966



7967



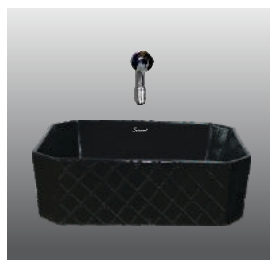
7968



7681



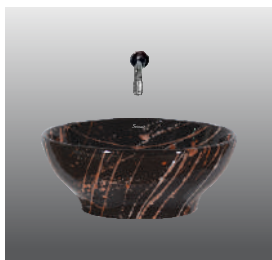
7682



7683



7684



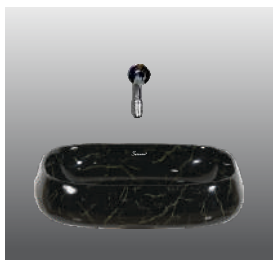
7881



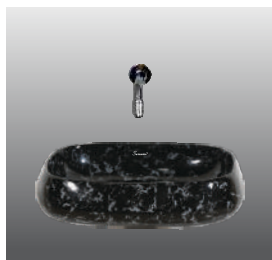
7882



S-1



S-2



S-3



S-6



S-7



S-8



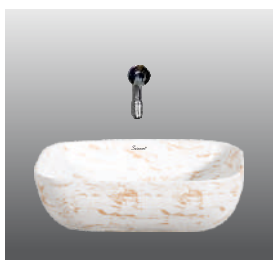
S-9



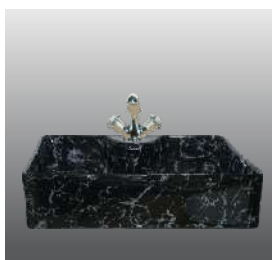
S-10



S-11



S-12



S-14



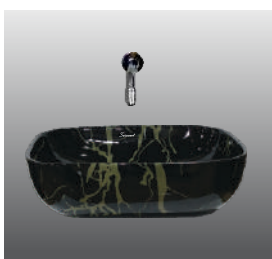
S-15



S-18



S-19



S-20



S-21



S-22



S-23



S-24



S-25



S-26



S-27



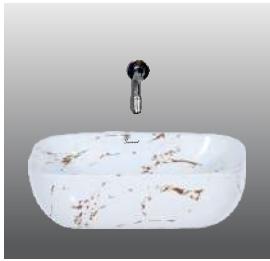
S-28



S-29



S-30



S-31



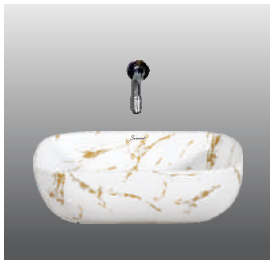
S-32



S-33



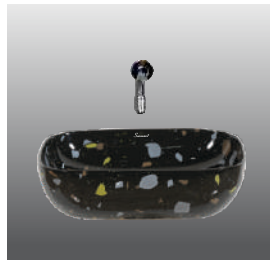
S-34



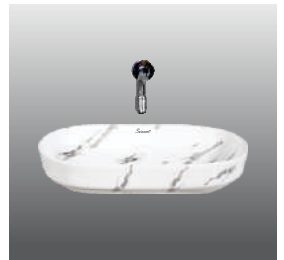
S-35



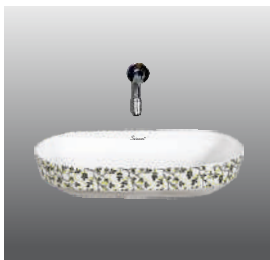
S-37



S-38



S-39



S-40



S-41



S-42



S-43



S-44



S-45



S-46



S-47

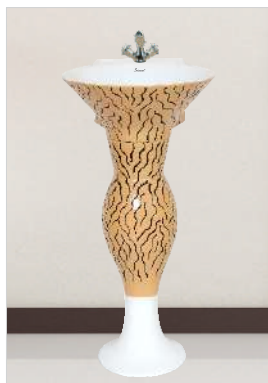
DOLPHIN VITROSA DOUBLE COLOUR



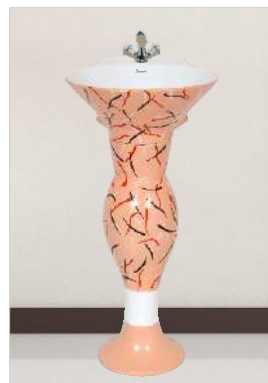
001



002



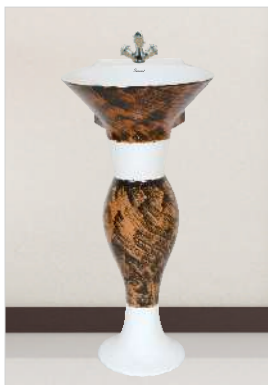
003



012

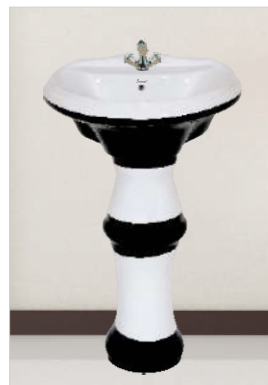


013



014

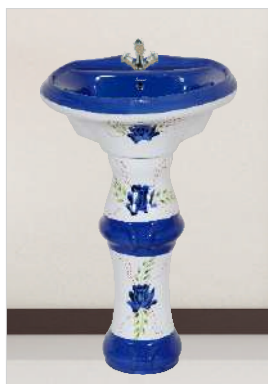
INNOVA VITROSA DOUBLE COLOUR



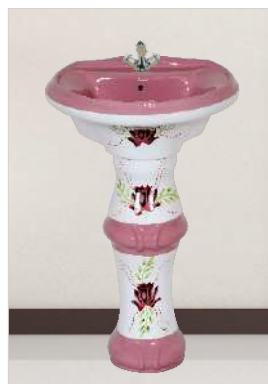
BLACK



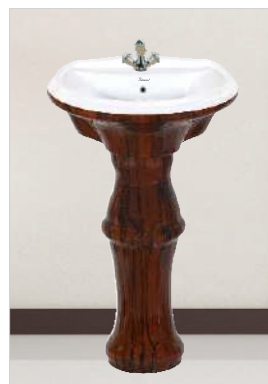
RED



ALPINE BLUE



MAGENTA



WOODEN

Swisware+
SANITARYWARES

STERLING

VITROSA
DOUBLE
COLOUR



MAGENTA



ALPINE BLUE

**BIG
STERLING**

VITROSA
DOUBLE
COLOUR



3001



3002



5001



5002



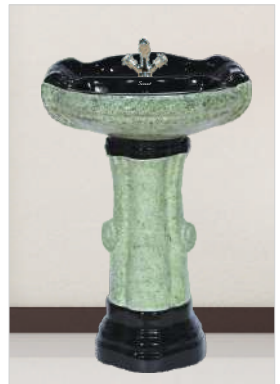
5003



5004



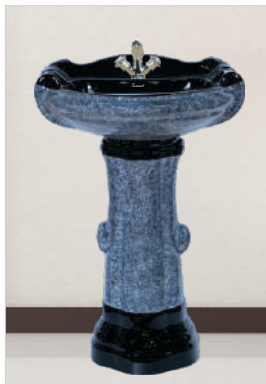
5005



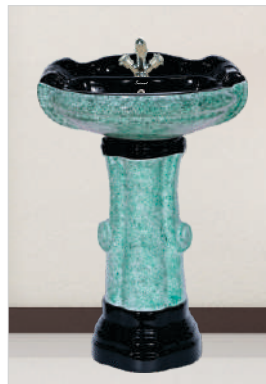
5011



5012



5013



5014



6001



6002



6003



6004



6005



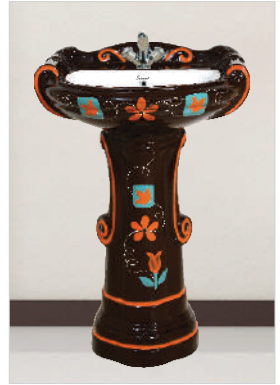
6006



6007



6008



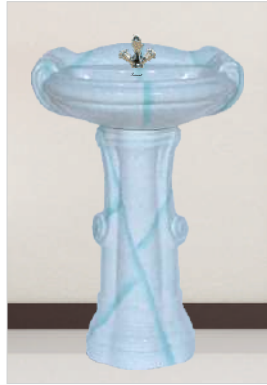
6010



6011



6012



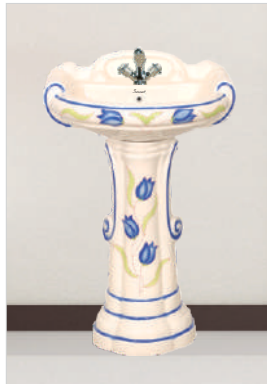
6013



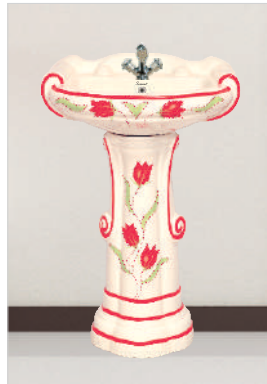
6014



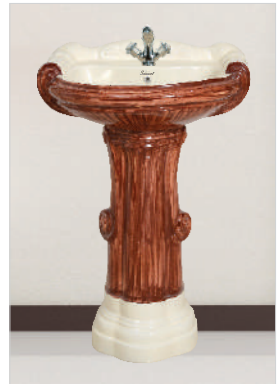
6015



1501



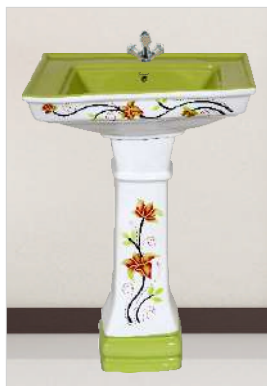
1502



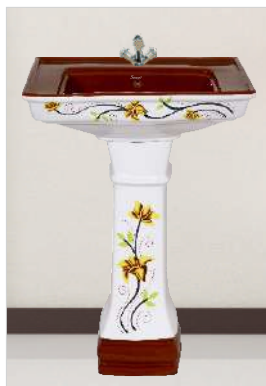
WOODEN

Swisware⁺
SANITARYWARES

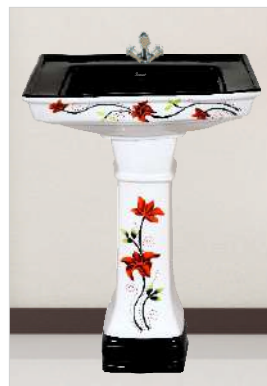
EURO
VITROSA
DOUBLE
COLOUR



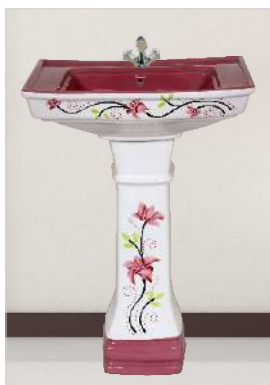
6501



6502



6503



6504



6505



6506



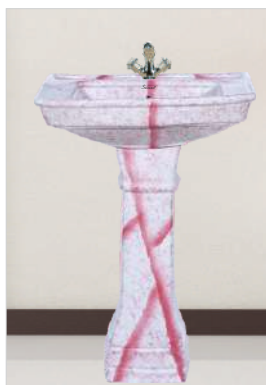
6507



6508



6509



6510



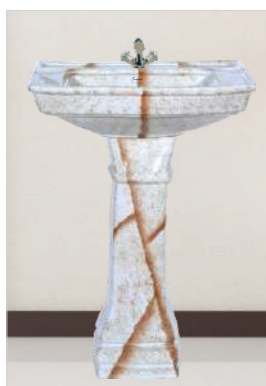
6511



6512



6513

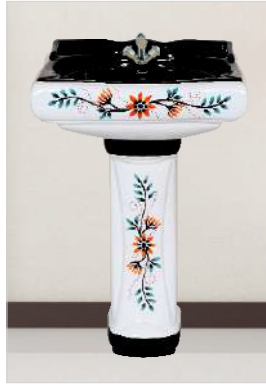


6514

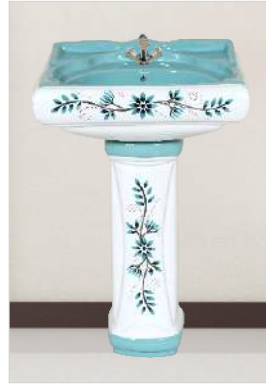


Swisware⁺
SANITARYWARES

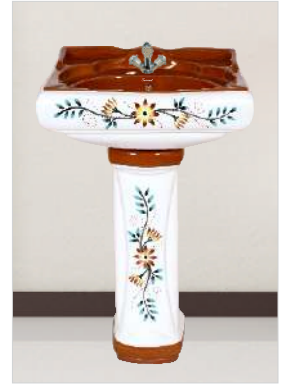
DOLLAR
VITROSA
DOUBLE
COLOUR



BLACK



AQUA GREEN

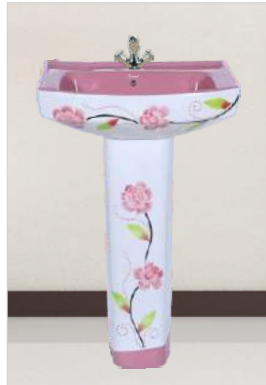


RED BROWN

AMAZON
VITROSA
DOUBLE
COLOUR



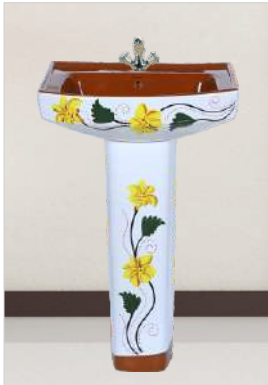
5501



5502



5503



5504



5505



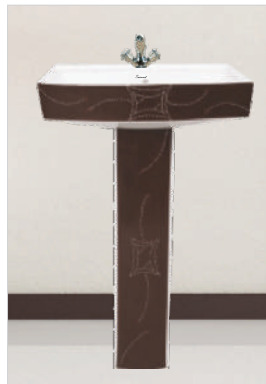
5506



5507



5508



5509



5511



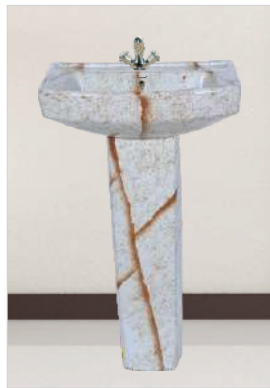
5512



5513



5514



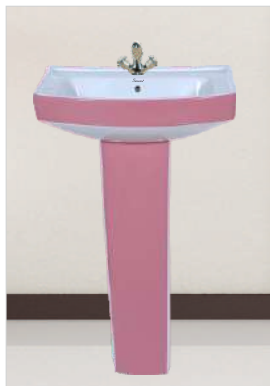
5515



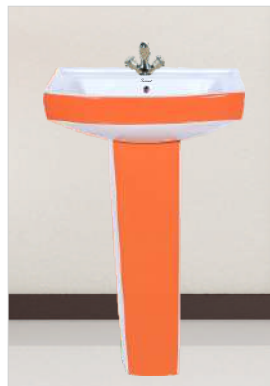
5516



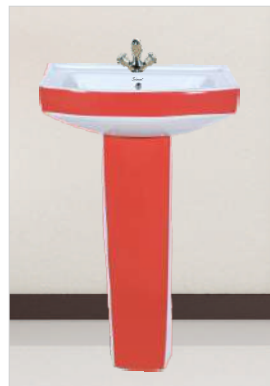
5517



5521



5522



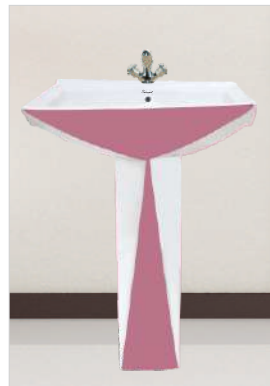
5523



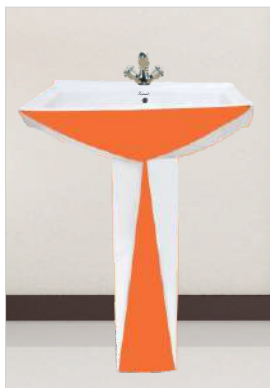
5524



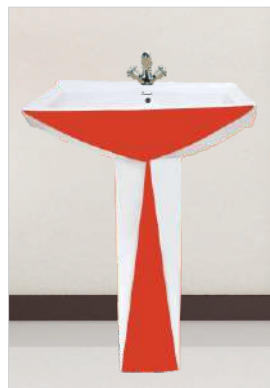
5525



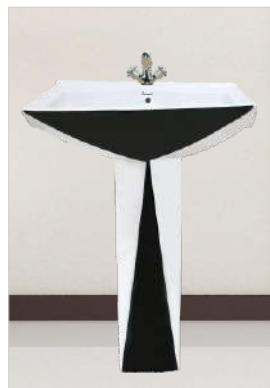
MAGENTA



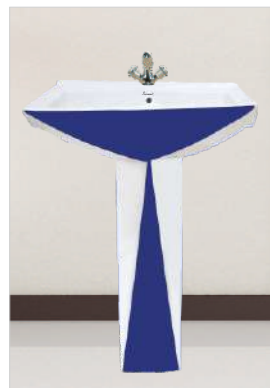
ORANGE



RED



BLACK

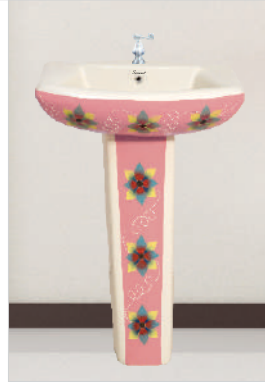


ALPINE BLUE

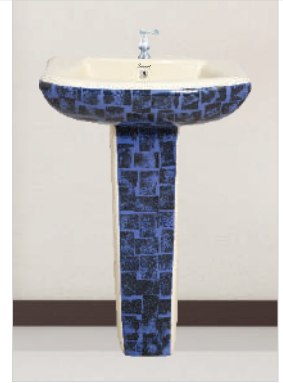
LEXO
VITROSA
DOUBLE
COLOUR



ALPINE BLUE



MAGENTA

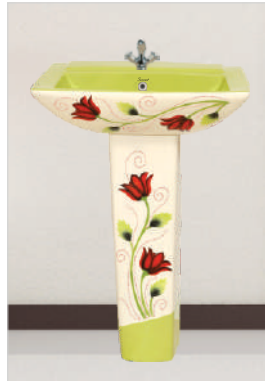


MARBLE

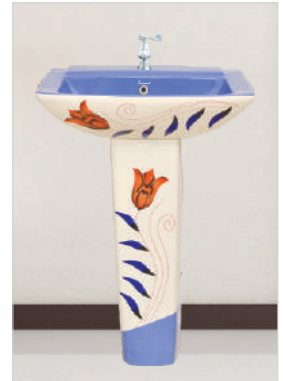
LAURET
VITROSA
DOUBLE
COLOUR



MAGENTA



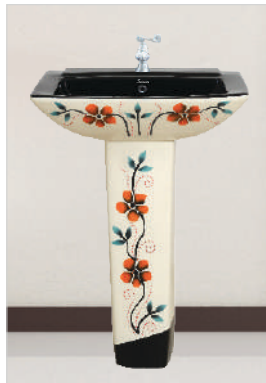
MINT GREEN



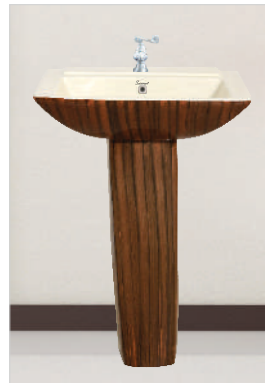
ALPINE BLUE



RED BROWN



BLACK



WOODEN

SOFIYA
VITROSA
DOUBLE
COLOUR



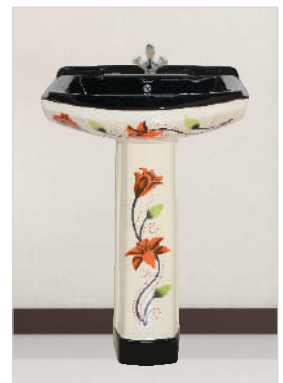
MAGENTA



MINT GREEN



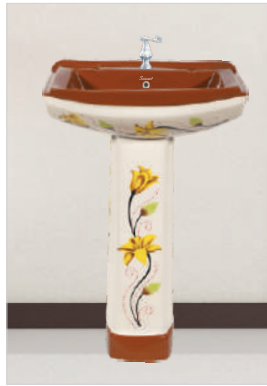
ALPINE BLUE



BLACK



RED



RED BROWN



ORANGE



BLACK



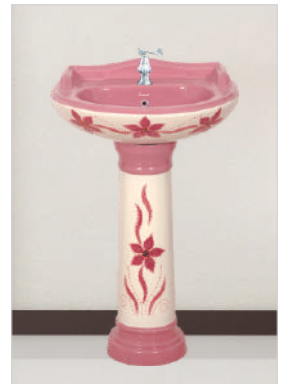
MAGENTA

Swisware+
SANITARYWARES

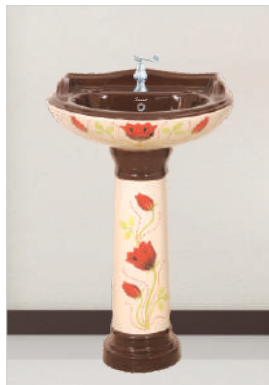
SERENA
VITROSA
DOUBLE
COLOUR



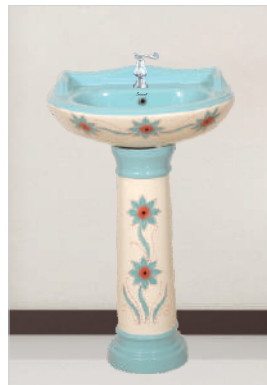
605



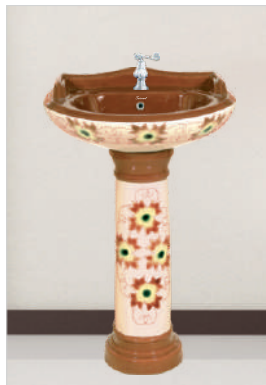
606



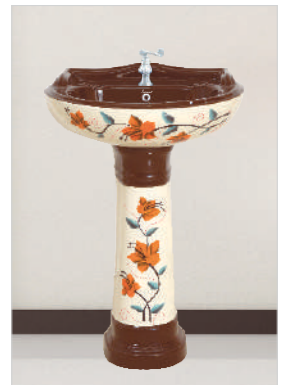
607



608



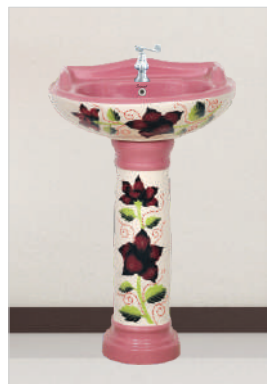
610



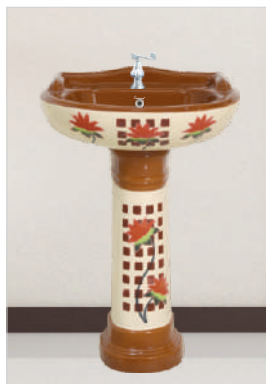
612



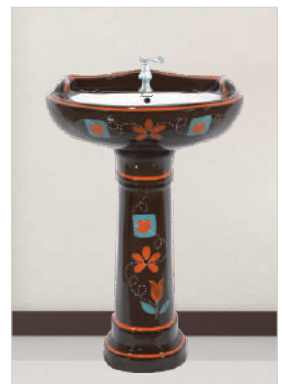
613



614



615



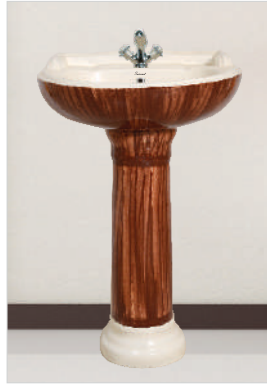
1001



1002



1003



1016



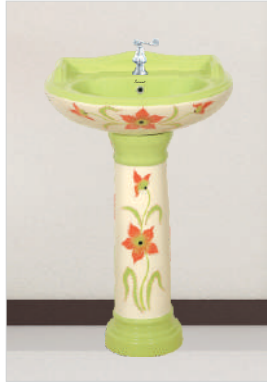
1019



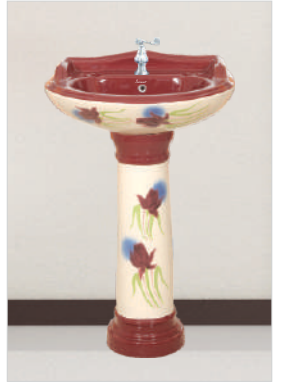
1020



1023



1026



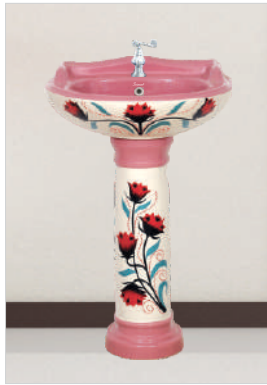
1027



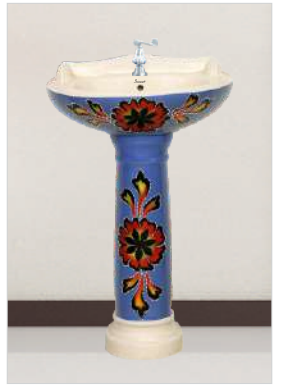
1028



1031



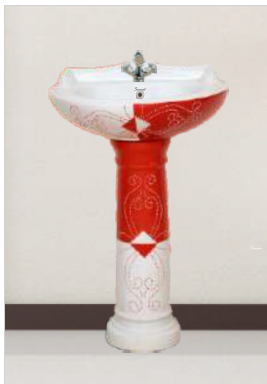
1033



1035



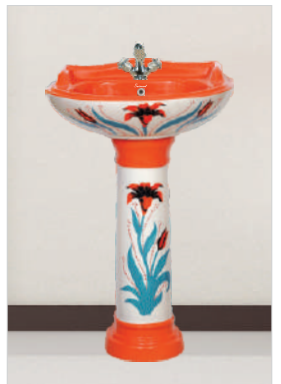
1036



1037



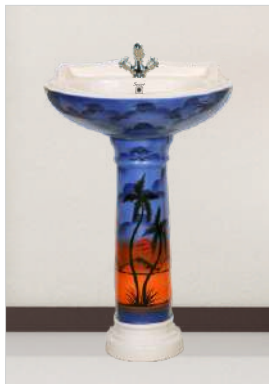
1039



1043



1044



1050



1051



1052



1061



1062



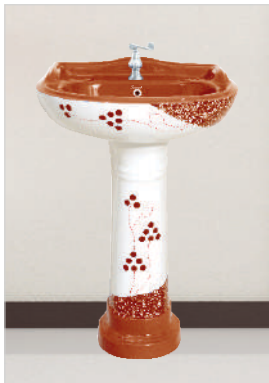
1063



1064



1065



1066



1067



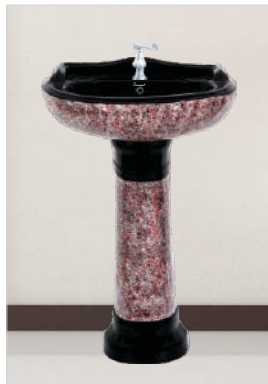
1068



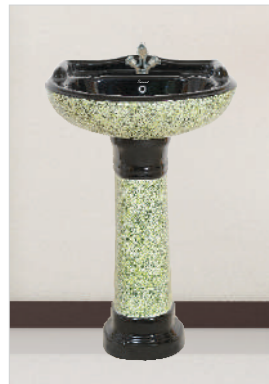
2001



2002



2003



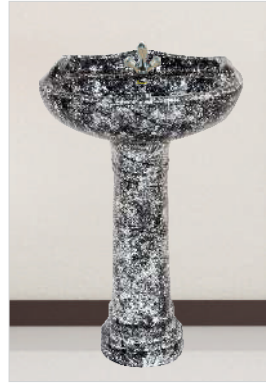
2004



2005



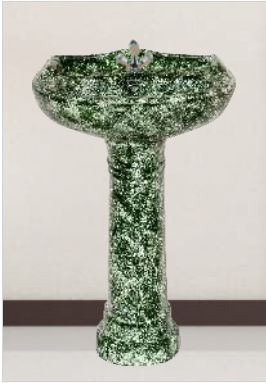
2006



4001



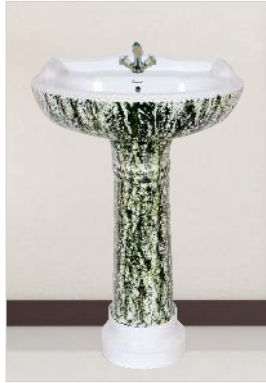
4002



4003



4005



4006



4011



4012



4013



4014



4015



4016



4017



4018



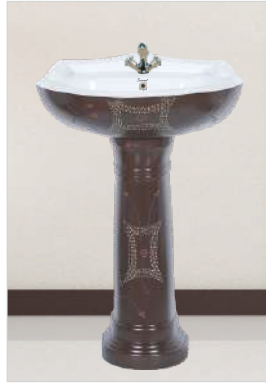
4019



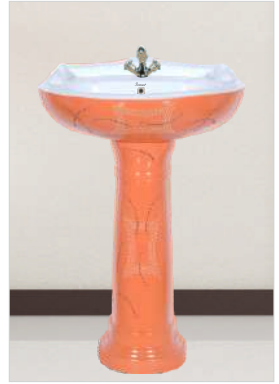
4020



4021



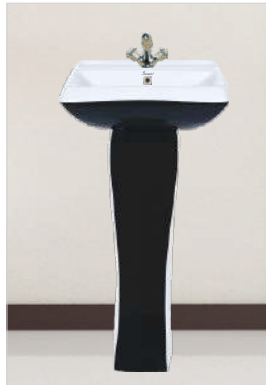
4022



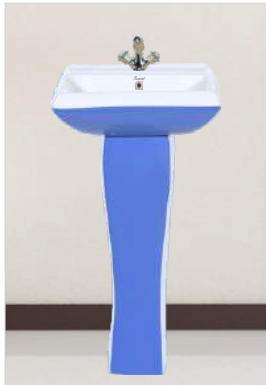
4023

Swisware+
SANITARYWARES

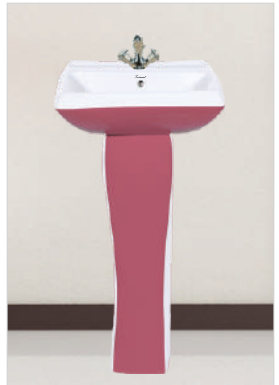
AMEO
VITROSA
DOUBLE
COLOUR



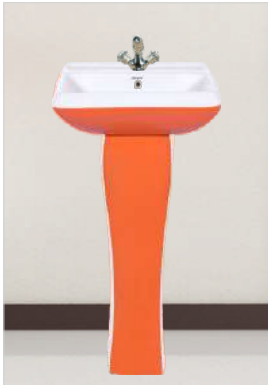
BLACK



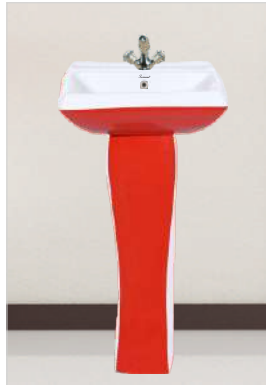
ALPINE BLUE



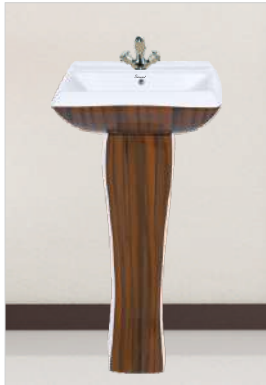
MAGENTA



ORANGE



RED



WOODEN



18"X14" SET
VITROSA
DOUBLE
COLOUR



RED BROWN



BLACK

Swisware⁺
SANITARYWARES

MICRA
VITROSA
DOUBLE
COLOUR



MAGENTA

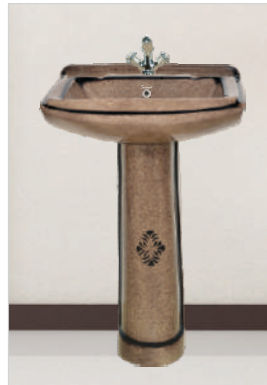


ALPINE BLUE

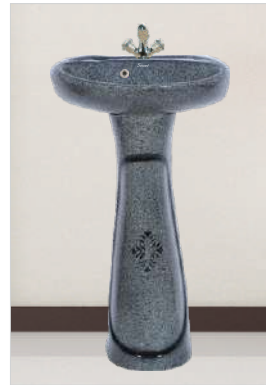


MINT GREEN

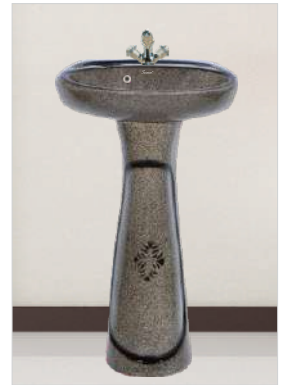
RUSTIC
SET



SOFIYA SET



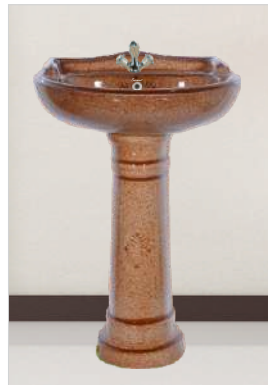
18x14 BLACK SET



18x14 COFFEE BROWN SET



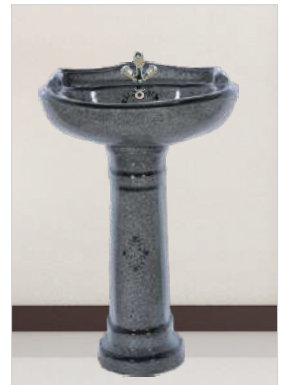
SERENA SET ALPINE BLUE



SERENA SET RED BROWN



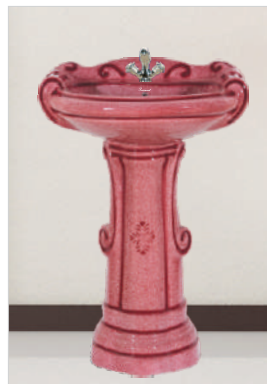
SERENA SET COFFEE BROWN



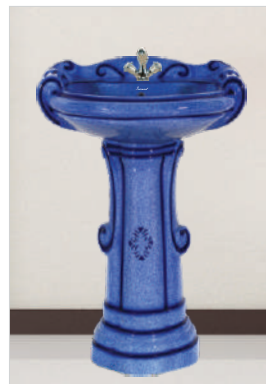
SERENA SET BLACK



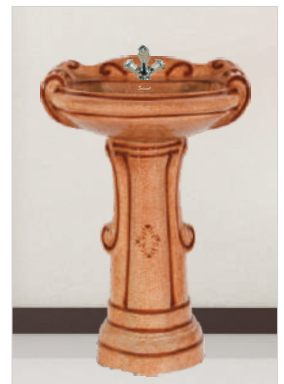
SERENA SET MAGENTA



BIG STERLING SET
MAGENTA



BIG STERLING SET
ALPINE BLUE



RED BROWN

Swisware+
SANITARYWARES

URINAL



HEXA URINAL



HALF STALL URINAL



NEXA URINAL



GENTS WALL URINAL



NANO URINAL



CORNER URINAL



FANCY URINAL



MINI HEXA URINAL



NEW CORNER URINAL



URINAL PARTITION



URINAL CHANNEL



LADIES URINAL



Swisware⁺
 SANITARYWARES
ORISSA
 PAN



20" O.P



20" O.P CROSS



M.D PAN



EASTERN PAN



ACUPRESSURE PAN



CITY PAN



21" (Stand) O.P



23" O.P



23" (Stand) O.P



BIG P-TRAP



S-TRAP

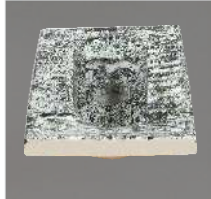


P-TRAP

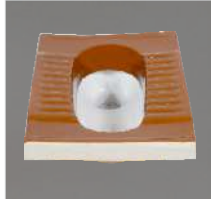
ALL COLOURS AVAILABLE IN ALL ITEMS



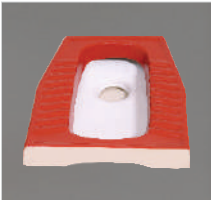
MARBLE - BLACK



MARBLE - OASIS GREEN



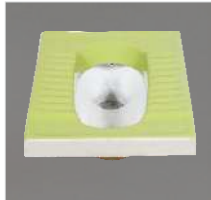
RED BROWN



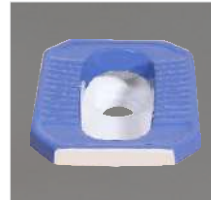
RED



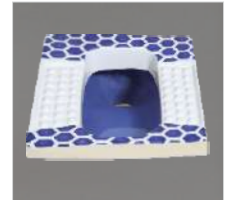
MAGENTA



MINT GREEN



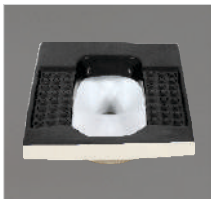
ALPINE BLUE



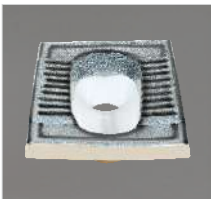
BLUE



OP.DOUBLE COLOUR
BLACK



BLACK



OP.DOUBLE COLOUR RUSTIC



EASTERN PAN RUSTIC



ORISSA PAN RUSTIC



Swisware⁺
SANITARYWARES



SMRUTI CERAMICS INDUSTRIES PVT LTD

MANUFACTURERS & EXPORTERS OF SANITARYWARES

REGD. OFFICE : NAVAGAM ROAD, THANGADH - 363 530, GUJARAT, INDIA.

PHONE : +91-2751-221234

FAX : +91-2751-221231

MOBILE : +91- 74050 50504 / 93272 29196

E-MAIL : info@smruticeramic.com • smruticeramic@gmail.com

WEB : www.smruticeramic.com